



**Palm City**  
IRONWORKS

— URBAN • MILANO • WROUGHT IRON —



# PREMIUM QUALITY UNRIVALED SELECTION

Palm City Ironworks is your dedicated partner for all of your iron and steel doors and windows. Our mission is to provide our clients with the best in quality, reliability, and timely production. We pride ourselves by offering the highest quality products on the market. Guided by a team of veterans in the door and window industry, we have the experience and organization to ensure your project is done the right way, every time.

We offer three full product lines: Wrought iron doors, Urban slimline doors, and Milano steel doors and windows. All fabricated with outstanding quality and delivered to our clients across the southeast. From design through completion, our knowledgeable staff can support your team in all aspects. When you choose Palm City Ironworks you will find that our selection and customization options are unparalleled.

## TABLE OF CONTENTS

<b>Urban &amp; Milano</b>	<b>4</b>
Finishes & Hardware	10
Urban Technical Specs	12
Milano Technical Specs	14
<b>Wrought Iron</b>	<b>16</b>
Technical Specs	19
Traditional Collection	22
Contemporary Collection	23
Fixed Glass Collection	24
Mediterranean Collection	25
Finishes & Hardware	26
<b>Interior Storefront</b>	<b>28</b>
<b>Remodels</b>	<b>30</b>















## TIMELESS AESTHETICS

Since the 1850s, doors and windows have been made from hot-rolled steel. Featured throughout big cities in many historic buildings, steel doors and windows have become incredibly popular in contemporary architecture.

Steel doors and windows offer superior benefits over traditional aluminum or wood;

- 3x stronger than aluminum and 16x stronger than wood
- Superior strength for inclement weather
- Easily customizable
- Narrow sight lines and maximized glass area allow for more natural light
- Best long-term value
- Perfect for replication on historic renovations





## DURABLE MATERIALS

**HOT-ROLLED STEEL PROFILES** are extruded from a single piece of steel to provide strength and durability.

**COLD-ROLLED STEEL PROFILES** are shaped by joining formed profiles with a thermal barrier material to provide enhanced energy performance.

**TUBULAR IRON PROFILES** use 12 gauge tubular profiles which allow for complete customization while maintaining strength and durability.





# SUPERIOR PERFORMANCE

## HURRICANE IMPACT CERTIFIED

Protection against the strongest weather mother nature can stir up. All Palm City product lines are impact hurricane rated for High Velocity Hurricane Zone (HVHZ). Our windows and doors offer certified protection without sacrificing style.



## SECURITY

Enjoy the view with peace of mind. Our products are crafted to offer maximum security.

## CORROSION PROTECTION

All products are galvanized, utilizing a multiple step finishing system with an automotive grade clear-coat sealer.

## ENERGY EFFICIENCY

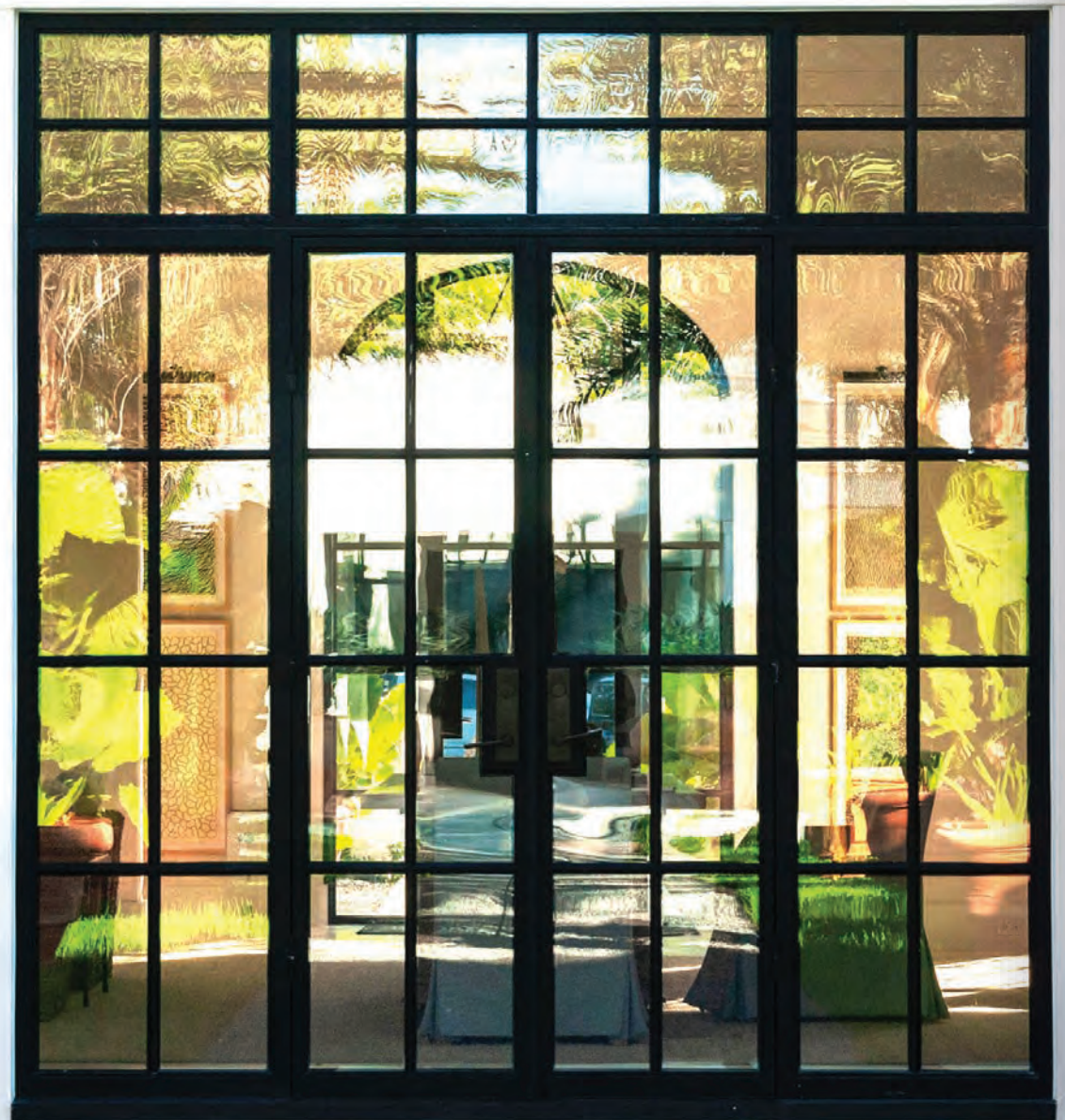
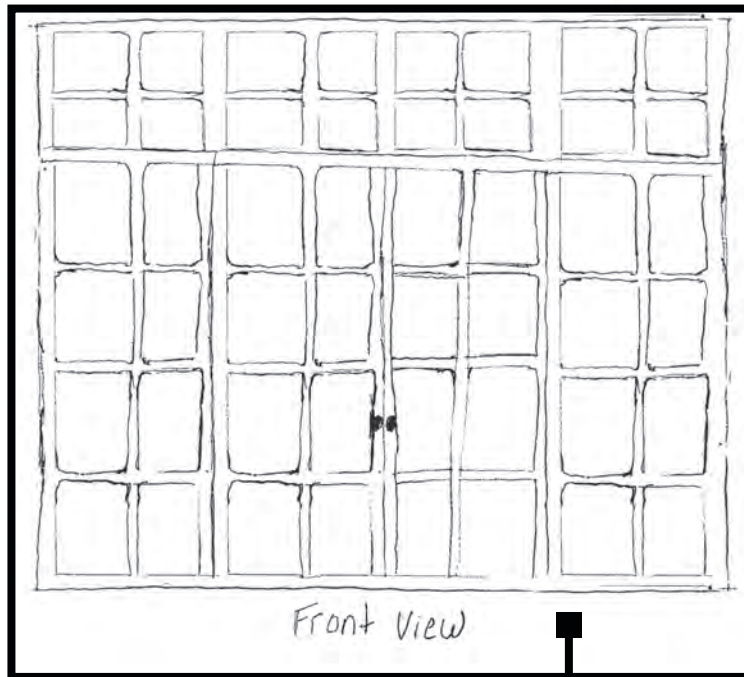
Our thermal technology creates a barrier between the interior and exterior sides to minimize energy loss. This helps keep indoor surfaces at their ambient temperature and to prevent condensation.





## CUSTOM DESIGN

Select a standard configuration or draw your own. The possibilities are only limited by your imagination.







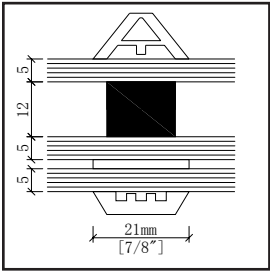


FINISHES

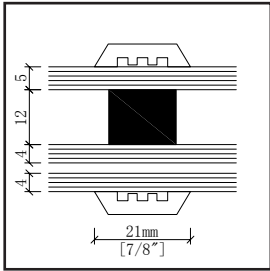
Our product lines give you the freedom to express personal style. From finish color to hardware, the details are in your control.

GRILL STYLE

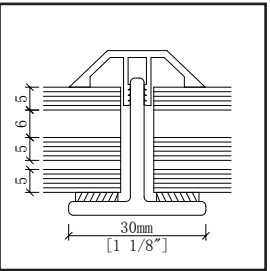
SDL Profiles



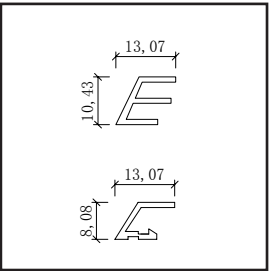
Raised Muntin



Flat Muntin



TDL Muntin  
Non-Impact Only



Perimeter Bead

SELECT YOUR FINISH



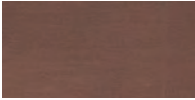
Aged Bronze (AB-4)



Aged Silver (AS-6)



Brushed Bronze (BB-3)



Brushed Copper (BC-5)



Matte Black (MB-2)



Pewter (PW-7)



Taupe (T-1)

GLASS OPTIONS

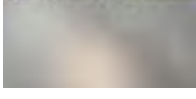
Available in both impact and non-impact



Standard  
Low E



Gray



Frosted



Bronze



Solarban 60  
(Energy Efficient)



Reflective Blue



# HARDWARE



UBLES Escutcheon  
10" x 2 1/2"  
Shown with Atlas 3750  
lever in Dark Oil Rubbed (8)



UBTUB Escutcheon  
Exterior: 17" x 2 1/2"  
Interior: 10 1/2" x 2 1/2"  
Shown with Helios 8800 knob in  
Polished Chrome (9)



SQTUB Escutcheon  
Exterior: 18" x 3"  
Interior: 11" x 2 1/2"  
Shown with Windsor 9000  
knob in Satin Nickel (4)

## LEVER OPTIONS



Apollo  
(4500)



Meridian  
(3100)



Atlas  
(3750)

## COLOR OPTIONS



Satin Nickel  
(4)



Polished  
Chrome (9)



Dark Oil  
Rubbed (8)



Flat Black  
(BK)

## FUNCTION

Tubular Entry (50)  
Full Dummy (42)

## HANDING

Left Hand or Right Hand

**BACKSET** 2 3/4"

## PANEL THICKNESS

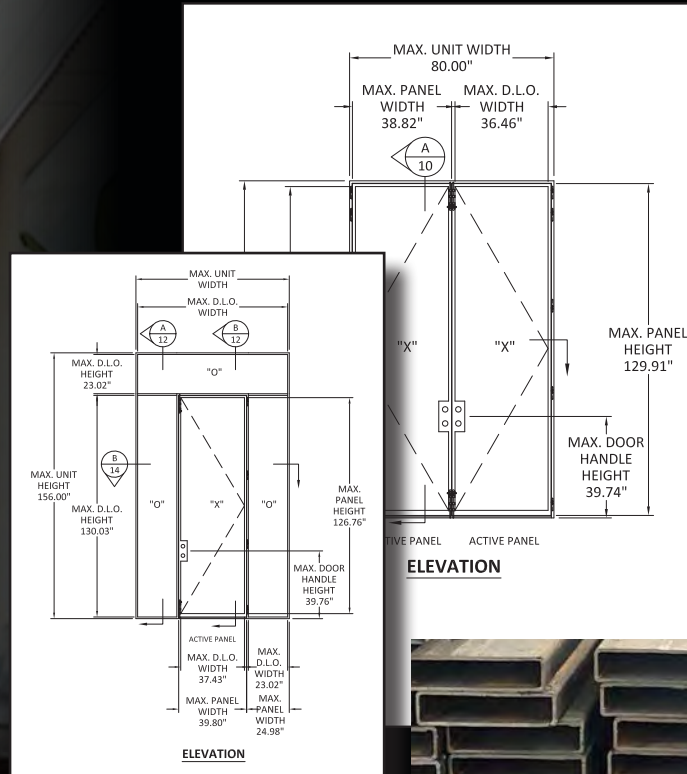
2" Thick





# URBAN SERIES

Urban Series products offer structural strength with a modern look. These products work great for single and double door installations, along with transom windows, fixed glass, and sidelites. The tubular iron structure of these products allows for impeccable sight lines and unbeatable strength.



## CONFIGURATION

Single and double doors, sidelites, transoms and fixed glass sections

## CONSTRUCTION DETAILS

- 12 Gauge tubular iron
- 1 5/8" Stile width x 2" deep
- 1" Wide x 6" deep jamb
- Double astragal standard
- Flushbolts in inactive panel top and bottom
- 3 Roller catches standard (impact units only)
- 4 Hinges per door panel
- Glass tolerance 5/8" - 1 1/2" Thickness

## ALSO AVAILABLE

- Surface bolts
- Custom jamb depth
- Thermal break upgrade
- Impact certified product (HVHZ) Available - FL27071
- Horizontal and vertical mull system compatible - FL32367







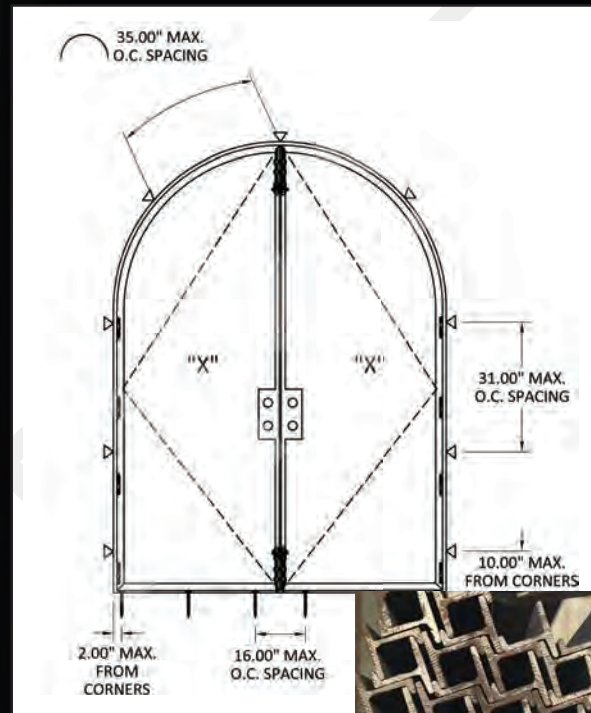


# MILANO SERIES



Our Milano Series are crafted using hot and cold-rolled steel profiles. Modern glazing bead and improved weather stripping are included to create the iconic look with modern efficiency.

W20 is perfect for fixed accent windows or push-out casements. For exterior doors and more functional windows our W40 is the right choice. W40 allows for increased depth, double glazing and Low-E glass up to 27mm thick. It is also a popular choice in restoration projects. MTS50 is a cold-rolled thermally broken profile for use in colder climates to provide enhanced energy efficiency.



## W40

### CONFIGURATION

Fixed windows, push-out and crank casement windows, awning windows, single and double doors and transoms. Units can be mullered together.

### CONSTRUCTION DETAILS

- Hot rolled steel profile
- Standard barrel hinge
- Glass tolerance 5/8" - 1 1/2" thickness
- Flushbolts in inactive panel top and bottom on door units
- 4 Hinges per door panel

### ALSO AVAILABLE

- Surface bolts
- Custom jamb depth
- Thermal break upgrade (see MTS50)
- Impact certified product (HVHZ) available - FL27072, FL27073, FL27074, FL27075
- Horizontal and vertical mull system compatible - FL32367



## W20

### CONFIGURATION

Fixed glass sections, push-out casement, can be mull together.

### CONSTRUCTION DETAILS

- Hot rolled steel profile
  - Standard barrel hinge
  - Glass tolerance up to 5/8"
- Thermal break or impact upgrade not available

## MTS50 (THERMALLY BROKEN)

### CONFIGURATION

Fixed windows, push-out and crank casement windows, awning windows, single and couple doors and transoms. Units can be mull together.

### CONSTRUCTION DETAILS

- Cold-rolled steel profile with thermal break
- Standard barrel hinge
- Glass tolerance 5/8"-1 1/2" thickness
- Flushbolts in inactive panel top and bottom on door units
- 4 Hinges per door panel
- Thermal break standard

### ALSO AVAILABLE

- Surface bolts
- Custom jamb depth
- Impact certified product (HVHZ) available - FL27072, FL27073, FL27074, FL27075
- Horizontal and vertical mull system compatible - FL32367











## MAGNIFICENT DESIGN. DEPENDABLE MATERIALS.

Created with a more traditional construction, our Wrought Iron Series doors offer a tubular design combined with decorative grillwork for increased customization.

### **TUBULAR IRON**

12 Gauge tubular profiles which allow for complete customization while maintaining strength and durability.







**REGIO**



## QUALITY CRAFTSMANSHIP

Our hand forged iron doors combine new world technology with old world artistry to create the perfect balance between performance and style.

We can fabricate any shape or size and have a large selection of glass, hardware and finishes to create a true expression of your style.

## PROTECTION & SECURITY

Our Wrought Iron products are crafted using top quality material. They can withstand harsh weather conditions and protect against forced entry.

All of our doors are rated to meet HVHZ hurricane codes.





## CONFIGURATION

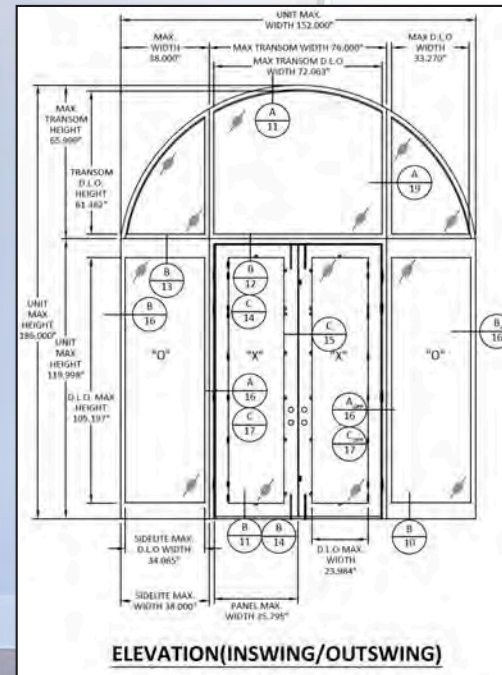
Single and double doors, sidelites, transoms and fixed glass sections

## CONSTRUCTION DETAILS

- 12 Gauge tubular iron
- 6" Stile width x 2" deep
- 2" Wide x 6" deep jamb
- Double astragal standard
- Flushbolts in inactive panel top and bottom
  - 3 Roller catches standard (impact units only)
  - 3 Hinges per door panel
  - Glass tolerance 5/8" - 1 1/2" thickness

## ALSO AVAILABLE

- Surface bolts
- Custom jamb depth
- Thermal break upgrade
- Impact certified product (HVHZ) Available - FL16749
- Horizontal and vertical mull system compatible - FL32367



ELEVATION (INSWING/OUTSWING)

6 LITE FIXED

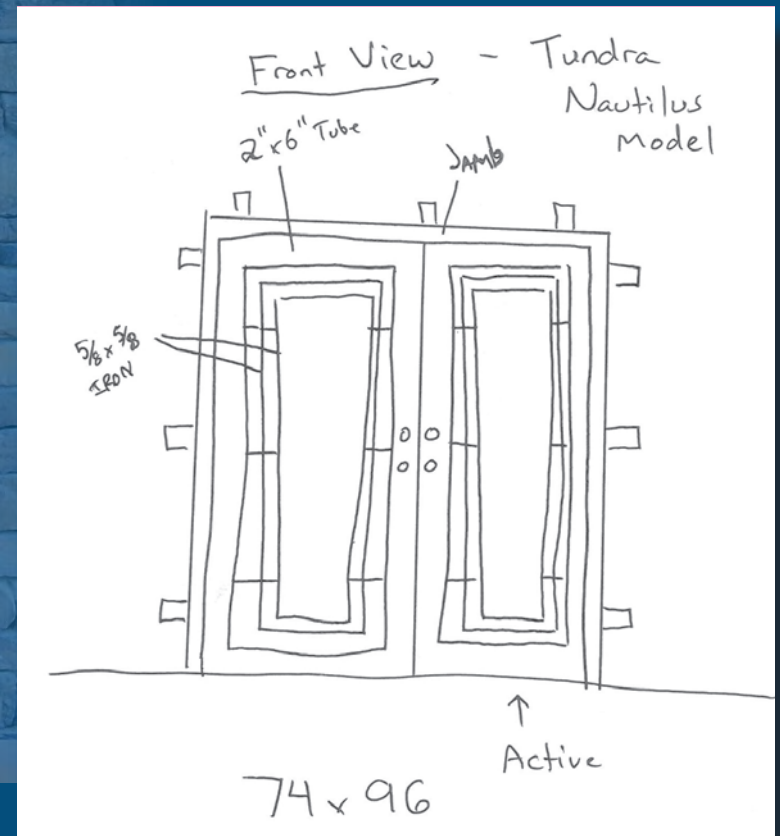


## ARTISTIC EXPRESSION

If you dream it, we can make it. Our hand-crafted Wrought Iron doors come in a large selection of standard styles, but the options do not end there. We can create custom-designed doors styled exactly to your personal preferences.



NAPLES







For more inspiration visit

[PALMCITYIRONWORKS.COM/WROUGHT-IRON-DOORS](https://PALMCITYIRONWORKS.COM/WROUGHT-IRON-DOORS)





**MARCO**

## TRADITIONAL COLLECTION

Celebrates time-honored patterns and creates opportunities to incorporate historical designs not typically available in doors.



**BASTROP**



**INTREPID**



**SUNBURST**



**ECLIPSE**

FOR MORE TRADITIONAL DESIGNS VISIT  
[PALMCITYIRONWORKS.COM/CATEGORY/WROUGHT-IRON-DOORS/TRADITIONAL/](http://PALMCITYIRONWORKS.COM/CATEGORY/WROUGHT-IRON-DOORS/TRADITIONAL/)



## CONTEMPORARY COLLECTION

Modern and sleek, our Contemporary Collection uses sharp lines to make a stunning entry.



**CONTEMPORARY**



**MIRAMAR**



**PATEL**



**LAKOYA**



**MODERNA**

FOR MORE CONTEMPORARY DESIGNS VISIT  
[PALMCITYIRONWORKS.COM/CATEGORY/WROUGHT-IRON-DOORS/CONTEMPORARY/](http://PALMCITYIRONWORKS.COM/CATEGORY/WROUGHT-IRON-DOORS/CONTEMPORARY/)



## WROUGHT IRON

### FIXED GLASS COLLECTION

Specify the number of glass panels and their spacing to create a unique Fixed Glass design.



**6 LITE**



**6 LITE**



**CLEAR LINE**



**3 LITE**

FOR MORE FIXED GLASS DESIGNS VISIT  
[PALMCITYIRONWORKS.COM/CATEGORY/WROUGHT-IRON-DOORS/FIXED-GLASS/](http://PALMCITYIRONWORKS.COM/CATEGORY/WROUGHT-IRON-DOORS/FIXED-GLASS/)



**BONITA**



# MEDITERRANEAN COLLECTION

Sweeping curves, detailed medallions and Tuscan designs.



**RUSTON**



**OLYMPIA**



**ROMANTICA**



**BONA FORTUNA**



**BENTON**

FOR MORE MEDITERRANEAN DESIGNS VISIT  
[PALMCITYIRONWORKS.COM/CATEGORY/WROUGHT-IRON-DOORS/MEDITERRANEAN/](http://PALMCITYIRONWORKS.COM/CATEGORY/WROUGHT-IRON-DOORS/MEDITERRANEAN/)





## FINISH OPTIONS

### SELECT YOUR FINISH



Black (B8)



Charcoal (BA-36)



Copper (BA-38)



Dark Copper (BA-38-1)



Dark Gold (BA-39-1)



Gold (BA-39)



Light Bronze (BA-16)



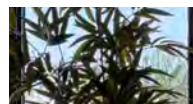
Nickel (BA-21)



Oil Rubbed Bronze (BA-16-1)

### GLASS OPTIONS

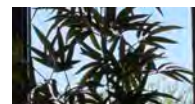
Available in both impact and non-impact



Clear Low E



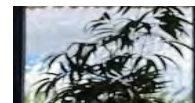
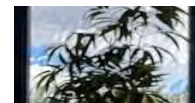
Frosted



Rain



Flemish



Aquatek



Flemish



Watercubed

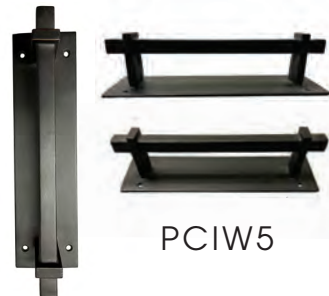
**CROSSFIRE**



## HARDWARE SELECTIONS

### DECORATIVE PULLS

\*Also available with the Urban Series.



#### FINISHES

Available in all 9 door finishes.

### THUMB LATCH HANDLESETS

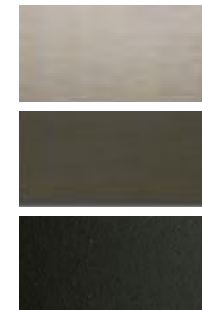


Addison

Camelot

Century

#### FINISHES



Satin Nickel

Aged Bronze

Black

#### FUNCTION

Tubular Entry  
Full Dummy

#### HANDING

Left Hand or  
Right Hand

#### BACKSET

2 3/4"

#### PANEL THICKNESS

2" Thick



### CUSTOM ENCLOSURES. FABRICATED TO PERFECTION.

Looking for a custom enclosure?  
Our products can be customized for a variety of applications.  
Interior applications are not subject to exterior forces so the possibilities are endless.

- Wine cellars
- Study enclosures
- Pantry doors
- Pocketing doors
- Barn doors
- Temperature-controlled spaces
- Office enclosures
- Commercial applications









## CREATED TO FIT

We specialize in providing products custom-fit for any remodel project. Our doors and windows are manufactured to match the specs of your existing openings for minimally invasive remodel and installation. Our Milano Steel product is perfect for historical renovations that need to meet historical society specifications.



**BEFORE**



**AFTER**











## **CORPORATE HEADQUARTERS**

3160 Kutak Rd., Fort Myers, FL 33916 • (239) 691-8400 • [palmcityironworks.com](http://palmcityironworks.com)